



Let **UK** Home

1 Bedrooms

Flat

Located in London

**£2,600 Per Month**



[info@letukhome.co.uk](mailto:info@letukhome.co.uk)

<https://www.letukhome.co.uk/>

01795 358 886



# 143 Park Road London

## NW8 7HY



Let UK Home are pleased to offer this 323 sq ft, ground floor, 1 bedroom 1 bathroom apartment set within a ported building opposite Regents Park.

Upon entering, you are greeted by a welcoming reception room that provides a versatile space for relaxation or entertaining guests. The flat features a well-appointed bedroom, ensuring a peaceful haven for rest. The bathroom is thoughtfully designed, offering modern amenities to cater to your daily needs.

This apartment is ideally suited to young professionals or students due to its proximity to the West End, as well as a number of top colleges and universities such as the London Business School, University of Westminster and the Royal College of Physicians.

Strathmore Court is located within a 10 minute walk from St John's Wood underground station (Jubilee Line) and Marylebone underground and overground station (Bakerloo Line and national railway). Lords Cricket Ground, along with the large variety of cafés, restaurants and boutique shops in St John's Wood are all easily accessible.

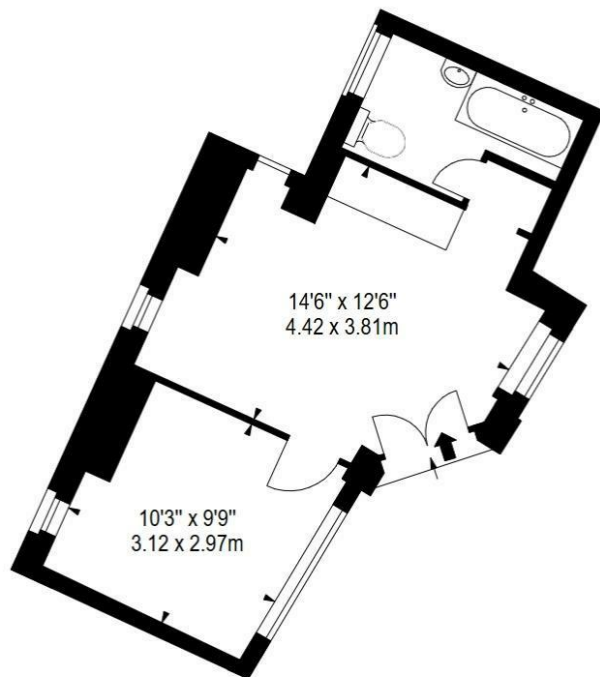
# 143 Park Road London

£2,600 Per Month



- Porter
- CCTV
- Available Furnished & Unfurnished
- Flexible Rental Terms
- EPC Rating: D
- Lift
- 24 hour emergency helpline & service
- Ground Floor
- Video Entry





Let **UK** Home

3F 2 Eastbourne Terrace  
 Paddington  
 London  
 W2 6LG

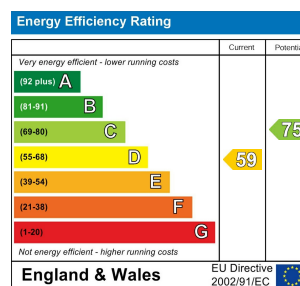
01795 358 886

info@letukhome.co.uk

**Council Tax Band: H**

**Local Authority:**

Agents Note: Whilst every care has been taken to prepare these particulars, they are for guidance purposes only. All measurements are approximate and are for general guidance purposes only and whilst every care has been taken to ensure their accuracy, they should not be relied upon and potential buyers/tenants are advised to recheck the measurements.



<https://www.letukhome.co.uk/>